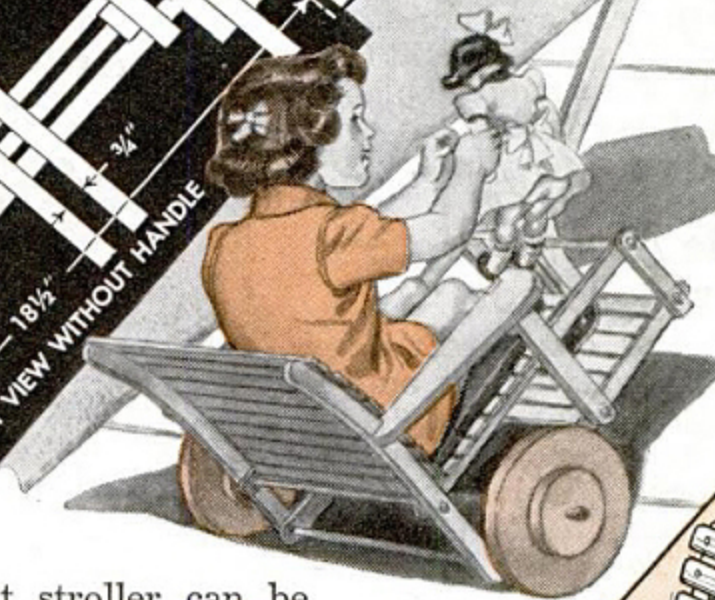
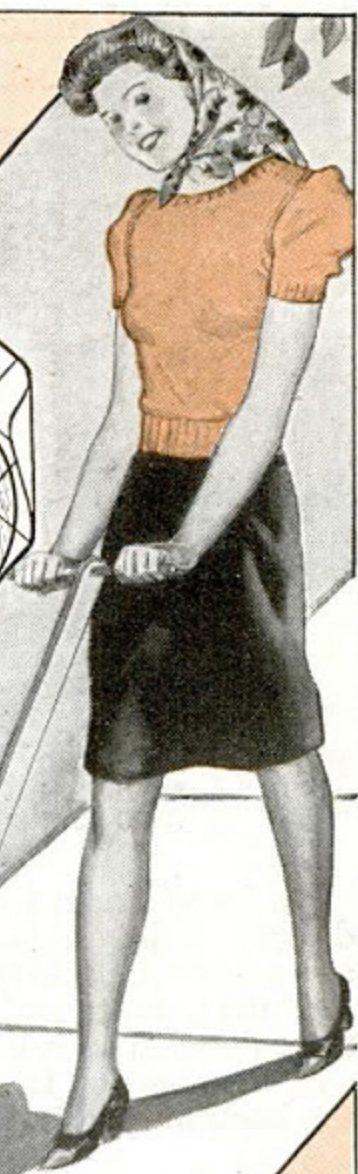
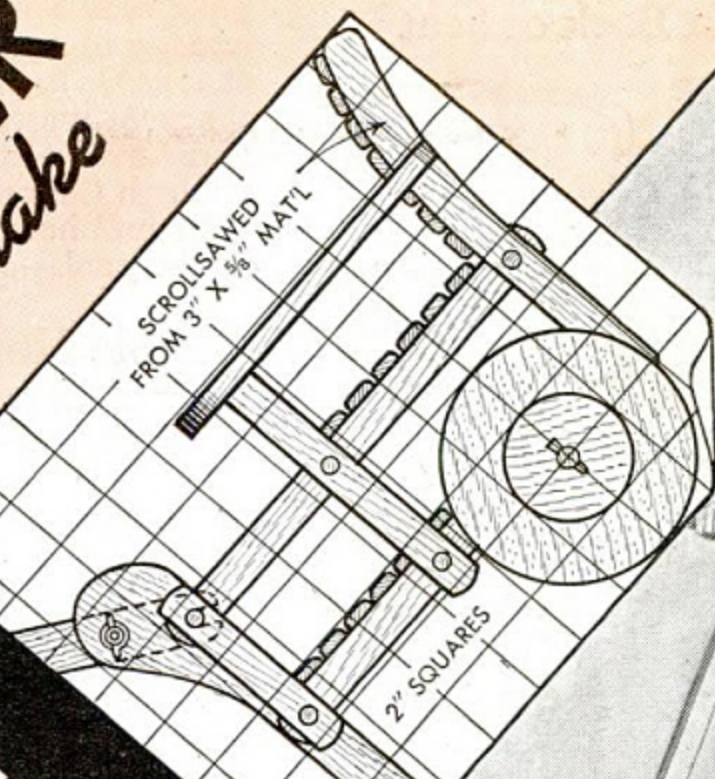
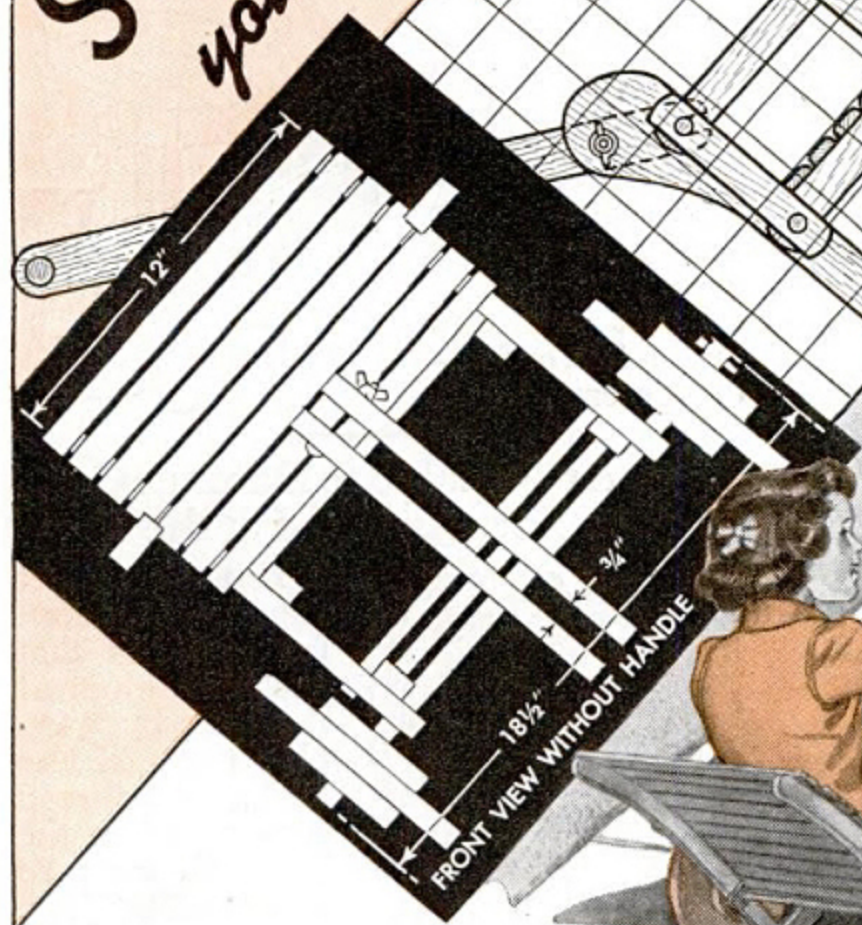


All Wood STROLLER you can make



THIS sturdy, lightweight stroller can be used on shopping trips as well as in the home as a chair for the baby. Space under the seat is floored for carrying packages, and the notched handle is retained by a removable wing nut. The axle is a 3/4-in. dowel lubricated with graphite, and the frame is joined from side to side by 5/8-in. dowels. The grain in the wheels and hubs should run at right angles for maximum strength. Glue and screws at all dowel joints will add rigidity to the vehicle. Oak stain and spar varnish will protect the stroller from the weather as well as add to its finished appearance.

